

SOWTER TYPE 1585

Input Transformer for Buchla 170 Mic Preamp Triad A-11J replacement

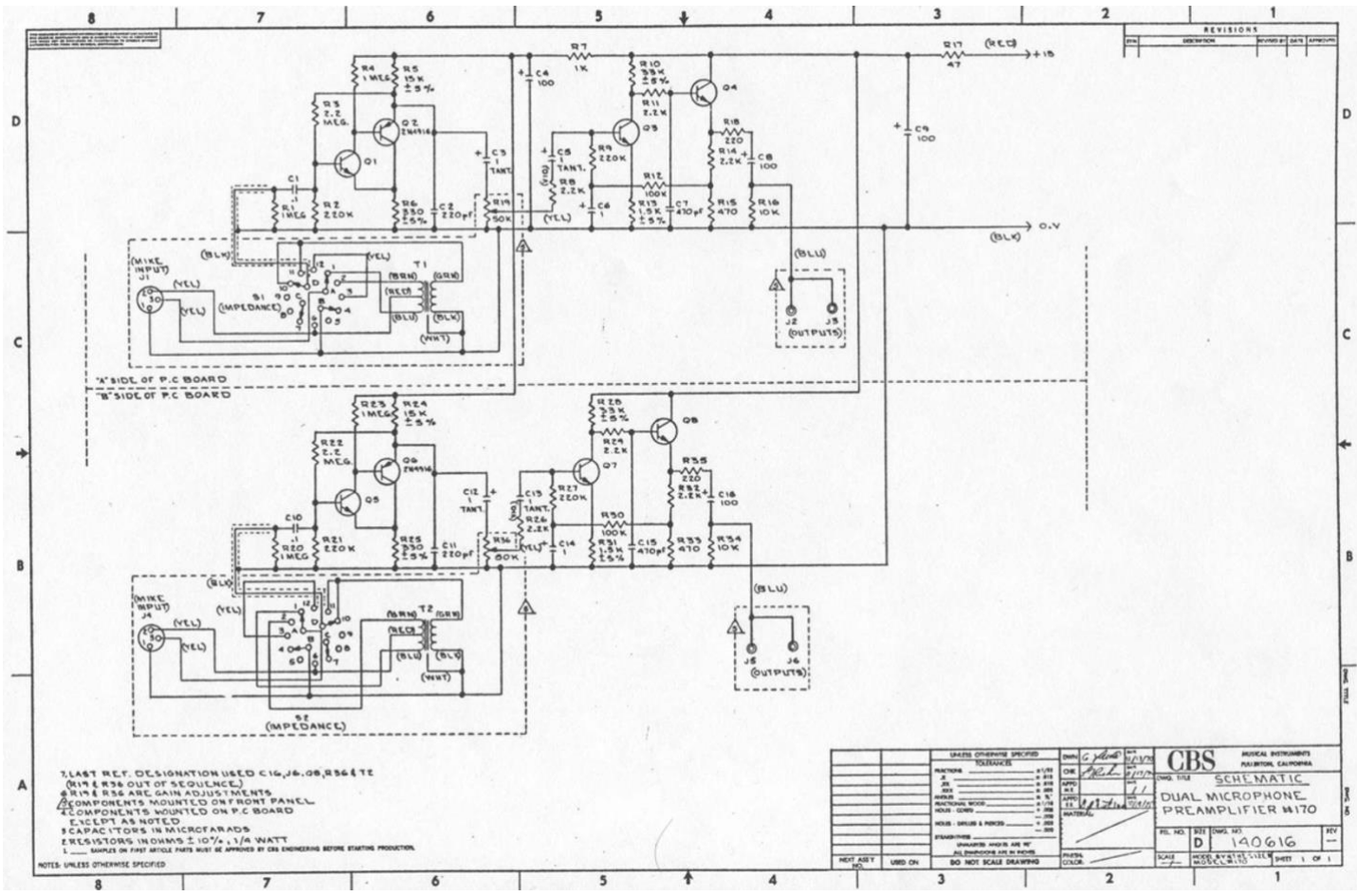
Applications

Ratio 1 : 10 with tap at 50 Ohms. Can be configured for 50 or 250 or 600 ohms. 100% Mumetal core and can. Colour coded leads. Size E normally shipped as Style f as illustrated. Threaded grommet option.



Mechanicals





2. LAST REF. DESIGNATION USED C16, J6, Q8, R36 & T2
 (R19 & R36 OUT OF SEQUENCE)
 3. R19 & R36 ARE GAIN ADJUSTMENTS
 4. COMPONENTS MOUNTED ON FRONT PANEL
 5. COMPONENTS MOUNTED ON P.C. BOARD
 6. EXCEPT AS NOTED
 7. CAPACITORS IN MICROFARADS
 8. RESISTORS IN OHMS ± 10%, 1/4 WATT
 9. SAMPLES OF PARTS MUST BE APPROVED BY DES. ENGINEER BEFORE STARTING PRODUCTION
 NOTES: UNLESS OTHERWISE SPECIFIED

UNLESS OTHERWISE SPECIFIED		DATE	BY
FUNCTION	TOLERANCES	10/1/78	...
RESISTORS	± 10%	10/1/78	...
CAPACITORS	± 10%	10/1/78	...
TRANSISTORS	AS NOTED	10/1/78	...
DIODES	AS NOTED	10/1/78	...
INDUCTORS	AS NOTED	10/1/78	...
RELAYS	AS NOTED	10/1/78	...
CONNECTOR JACKS	AS NOTED	10/1/78	...
SWITCHES	AS NOTED	10/1/78	...
PRINTED CIRCUIT BOARD	AS NOTED	10/1/78	...
WELDING	AS NOTED	10/1/78	...
FINISHING	AS NOTED	10/1/78	...
PACKAGING	AS NOTED	10/1/78	...
UNLESS OTHERWISE SPECIFIED	UNLESS OTHERWISE SPECIFIED	UNLESS OTHERWISE SPECIFIED	UNLESS OTHERWISE SPECIFIED
DO NOT SCALE DRAWING	DO NOT SCALE DRAWING	DO NOT SCALE DRAWING	DO NOT SCALE DRAWING

CBS MEDICAL INSTRUMENTS
 PALMDALE, CALIFORNIA

WORK TITLE: **DUAL MICROPHONE PREAMPLIFIER W/10**

REV. NO. 1
 REV. DATE 10/1/78
 REV. BY [Signature]

SCALE: 1:1
 SHEET 1 OF 1